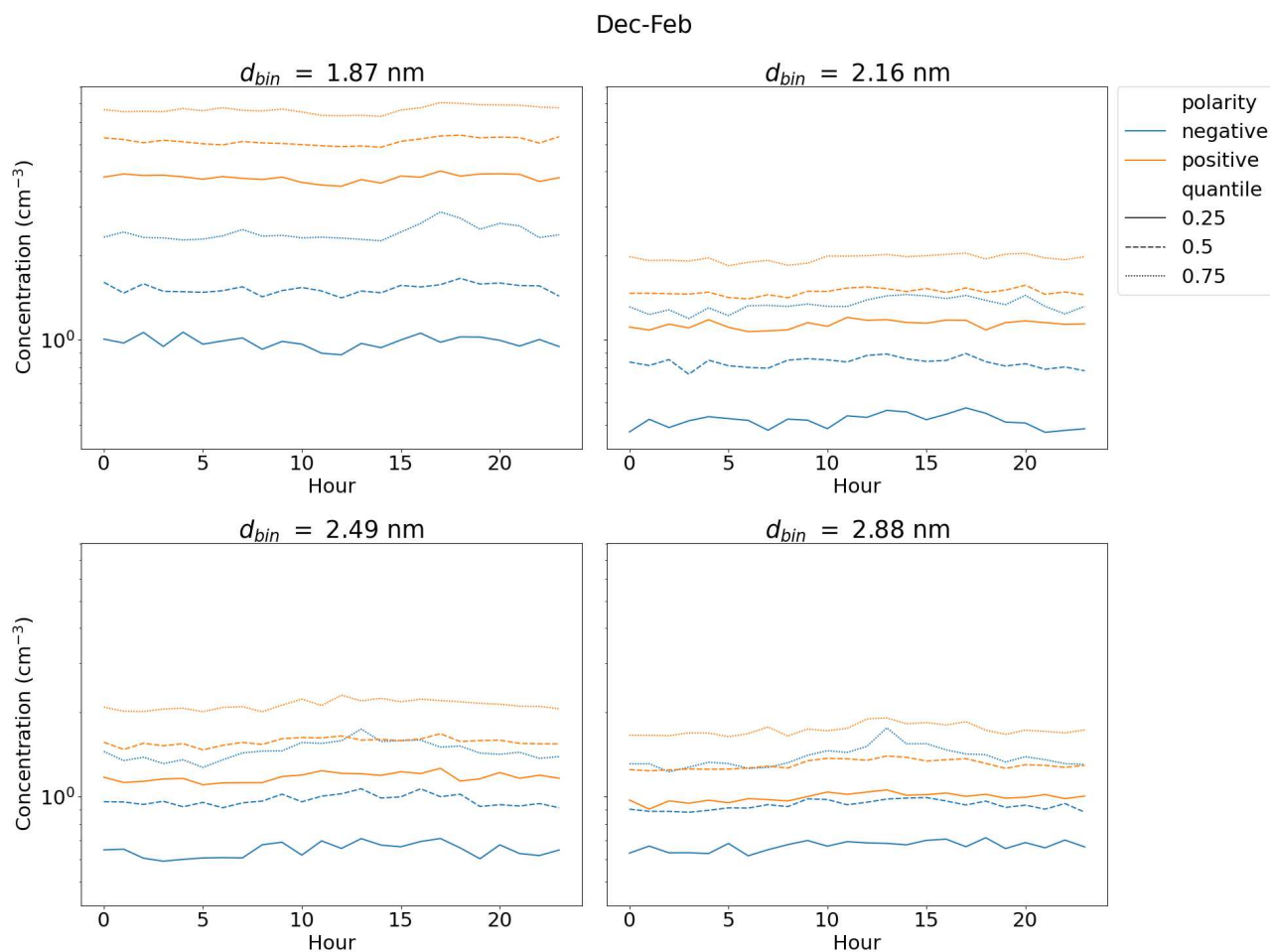


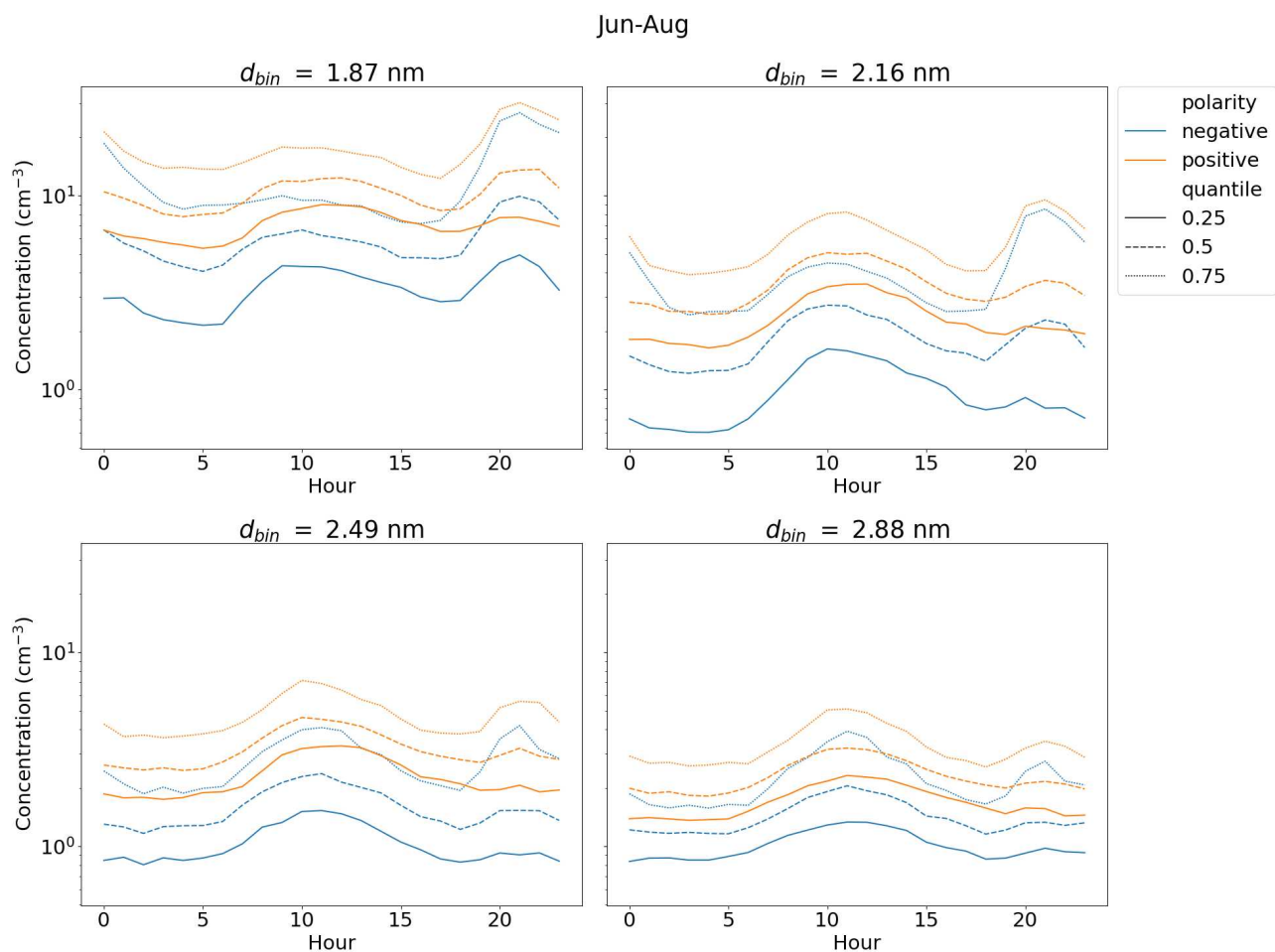
*Supplementary of* **Intermediate ions as indicator for local new particle formation**

**Santeri Tuovinen et al.**

Correspondence to: Markku Kulmala ([markku.kulmala@helsinki.fi](mailto:markku.kulmala@helsinki.fi))



**Fig. S1:** Hourly ion concentrations from December-February in size bins with geometric mean mobility diameter  $d_{bin}$  based on median, 25%, and 75% quantiles. The ion concentrations were measured by Neutral cluster and Air Ion Spectrometer (NAIS) at SMEAR II measurement station in Hyttälä, Finland from 2016 to 2020.



**Fig. S2:** Hourly ion concentrations from December-February in size bins with geometric mean mobility diameter  $d_{bin}$  based on median, 25%, and 75% quantiles. The ion concentrations were measured by Neutral cluster and Air Ion Spectrometer (NAIS) at SMEAR II measurement station in Hyytiälä, Finland from 2016 to 2020.